

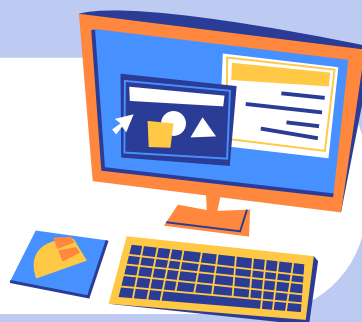
Your quick guide to joining the FitnessCenter/SpaGetty

Professionally managed by  HealthFitness®

Employees who are Regular or Limited-Term Getty staff, regularly scheduled to work 20 or more hours per week, Scholars or Interns (over the age of 18) are eligible to join the Fitness Center. Membership is free.

Create your Club Automation account

Using your Getty email, create your profile account on Getty's fitness member management system by visiting <https://gettyfitness.clubautomation.com>



Schedule your New Member Orientation

Now that you have created your account we can activate it during your new member orientation. Email Fitnesscenter@getty.edu to request to be added to the next scheduled orientation.

Read the Fitness Center Policies and Procedures

Your appointment will include additional enrollment instructions including directions to the center and a copy of the Policies and Procedures. This is a very important step as it helps you understand gym etiquette and expectations.



Attend your In-Person Orientation

Your almost there! This is your final enrollment step. During your orientation your account will be activated and you will learn all about the center offerings including a general overview of the gym equipment large and small. It is also a great time to ask questions and learn how to sign up for classes.



Congratulations! You've taken the first step towards meeting your fitness goals.

